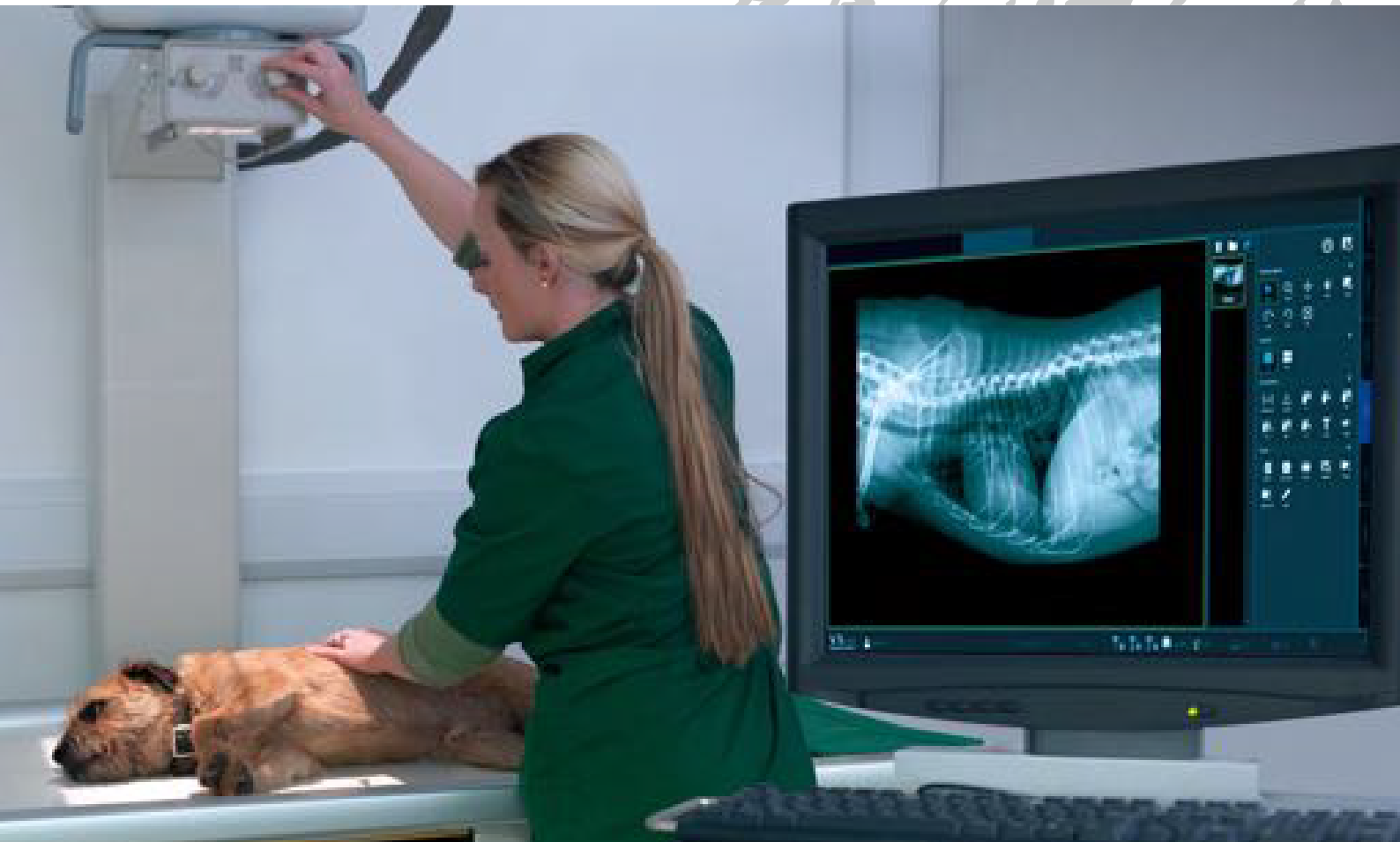
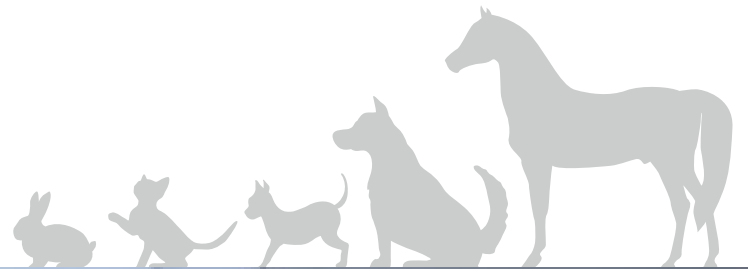




SATURN 8000 1717V

Flat Panel X-ray Detector for Veterinary



Optimized
Veterinary solution
for retrofit and system



Easy installation
(cassette tray)



High image quality



Fast booting time



Efficient workflow

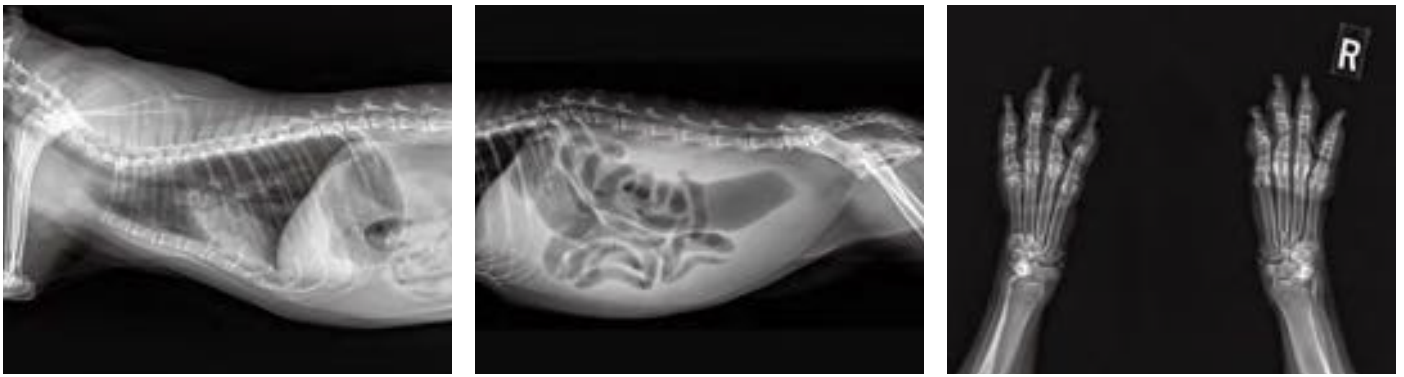
Features

- * 17"X17" fixed cassette size tethered panel
- * Stable and reliable AED (Automatic Exposure Detection)
- * Fast booting time: 15 seconds
- * Robust mechanical structure
- * 16 bit analog-to-digital conversion

Drawing



Clinical Images



* Standalone clinical images may have been cropped to better visualize pathology.

Technical Specifications

Model Name	Saturn 8000 17x 17V Csl	Saturn 8000 17x 17V Gadox
Technology	a-Si TFT with PIN diode	
Scintillator	Csl:TI	Gd ₂ O ₂ S:Tb
Pixel Pitch	140µm	
Spatial Resolution	3.5lp/mm	
Pixels	3,072 x 3,072 pixels	
Image Size	430.08mm x 430.08mm	
Grayscale	16 bit	
Energy Range	40 – 150kV	
X-ray Generator Interface	Automatic Exposure Detection, External Line Trigger	
Data Interface	Gigabit Ethernet (1000BASE-T)	
Image Acquisition Time	2 sec	
Dimensions	460mm x 460mm x 15.5mm	
Weight	4.5kg	
Operating Environment	10°C – 35°C, 30 – 85% RH (non-condensing)	

* Specifications are subject to change without prior notification.

Office

3F., NO.32, Sec. 2, Zhongyang S. Rd., Beitou Dist., Taipei City 11270, Taiwan
 Tel +886-2-2892-2275 Fax +886-2-2892-2172 E-mail Sales@newmedical.com.tw

Factory

41-3, Burim-ro 170 beon-gil, Dongan-gu, Anyang-si, Gyeonggi-do, 14055 Republic of Korea